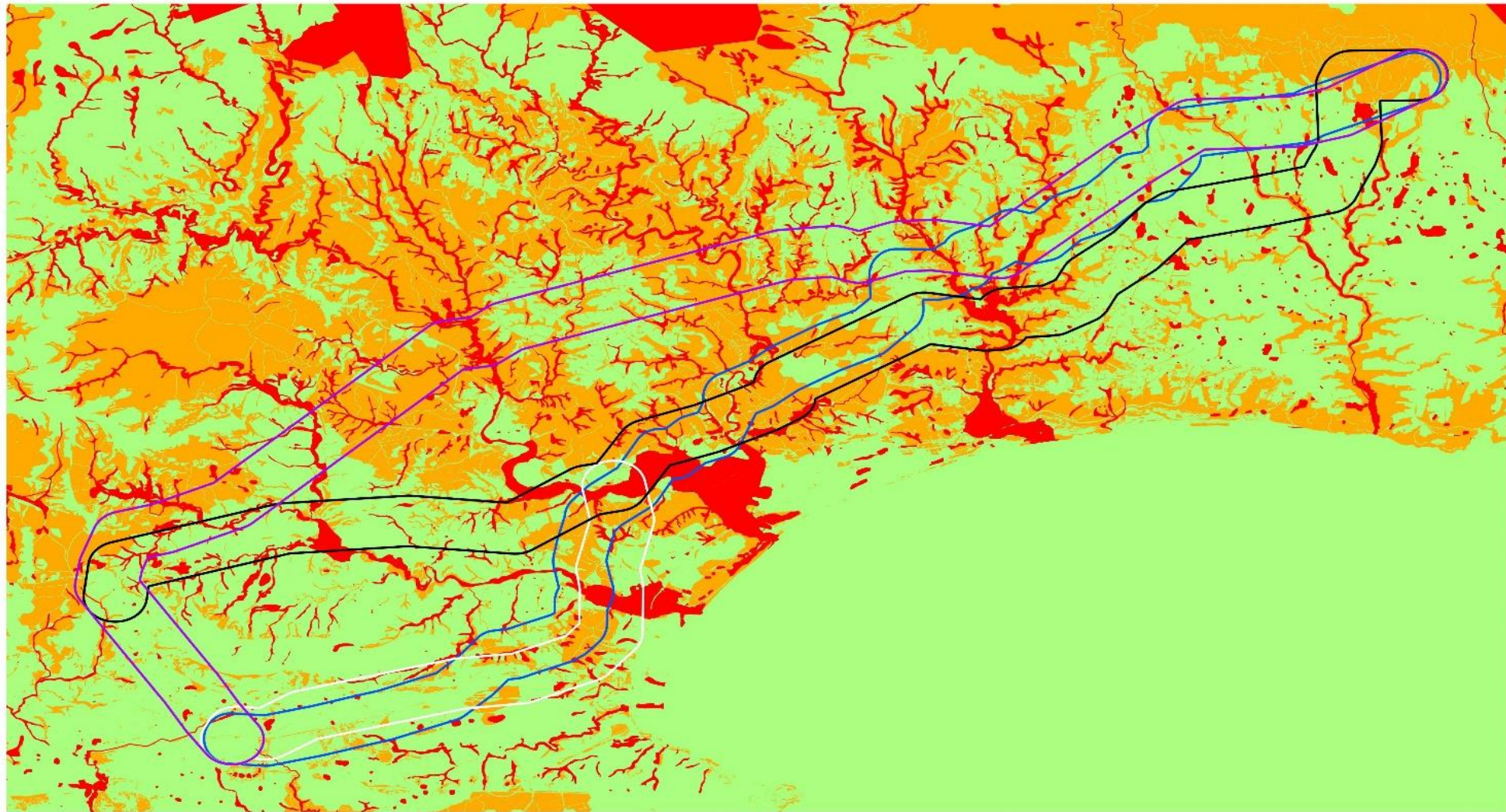


# ECOLOGICAL SENSITIVITY

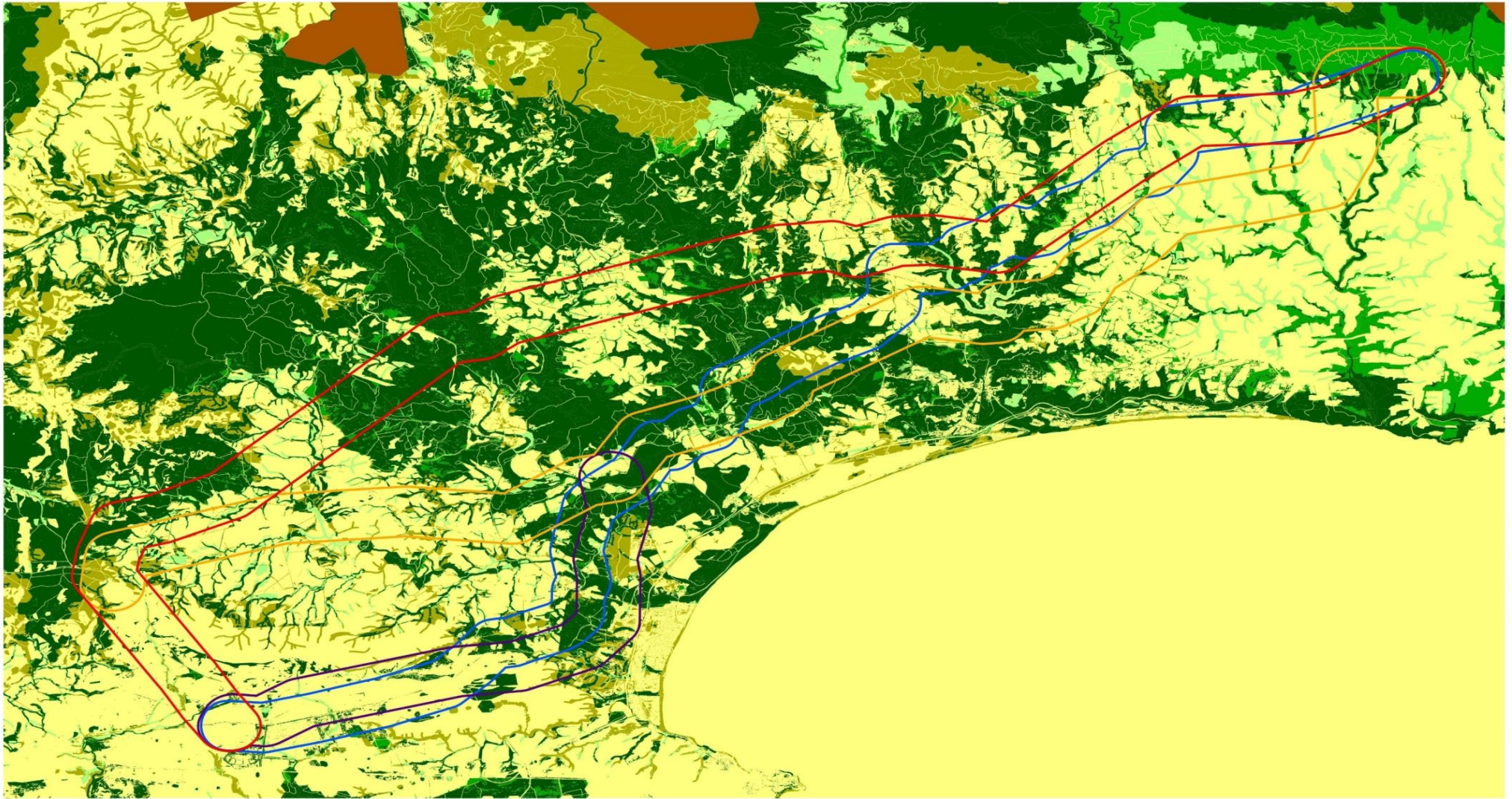


Legend	
HIGH	Alternative 1
MODERATE	Alternative 2
LOW	Alternative 3
	Alternative 4

**SENSITIVITY:  
ESKOM GOURIKWA-BLANCO  
400kV POWERLINE**

CRAIG SHOLTO-DOUGLAS  
JUNE 2017

# CRITICAL BIODIVERSITY AREAS WITHIN THE PROJECT AREA (WCBSP, 2017)



**Legend**

Alternative 1	Protected Areas
Alternative 2	Critical Biodiversity Area 1
Alternative 3	Critical Biodiversity Area 2
Alternative 4	Ecological Support Area 1
	Ecological Support Area 2

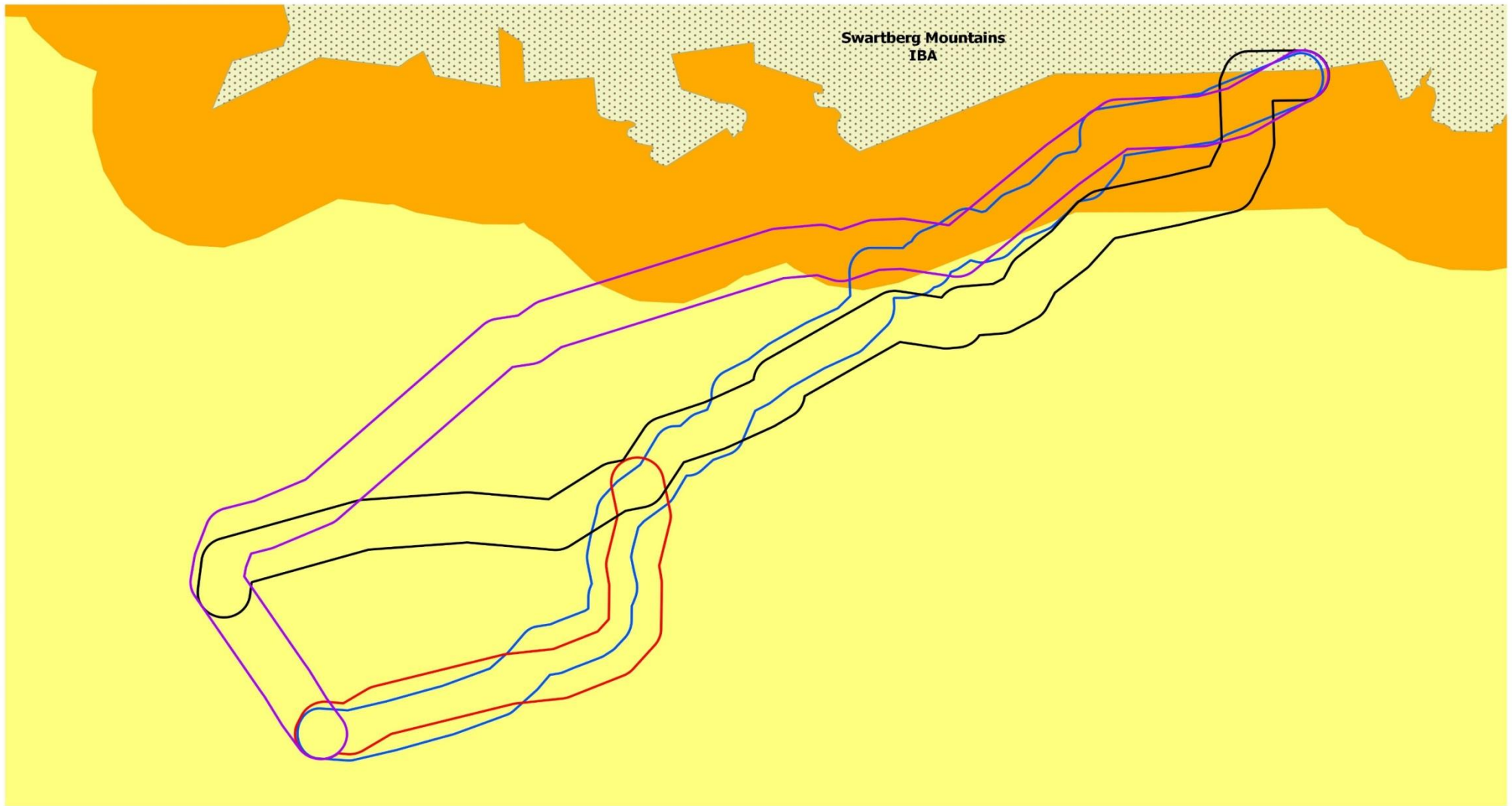


## CRITICAL BIODIVERSITY AREAS: ESKOM GOURIKWA-BLANCO 400kV POWERLINE

CRAIG SHOLTO-DOUGLAS  
JUNE 2017



# IMPORTANT BIRD AREAS (IBAS)



Swartberg Mountains  
IBA

5 0 5 10 15 20 kms



## Legend

- Alternative 1
- Alternative 2
- Alternative 3
- Alternative 4
- Important Bird Areas (IBAs)
- 5km IBA Buffer

**Important Bird Areas (IBAs):  
ESKOM GOURIKWA-BLANCO  
400kV POWERLINE**

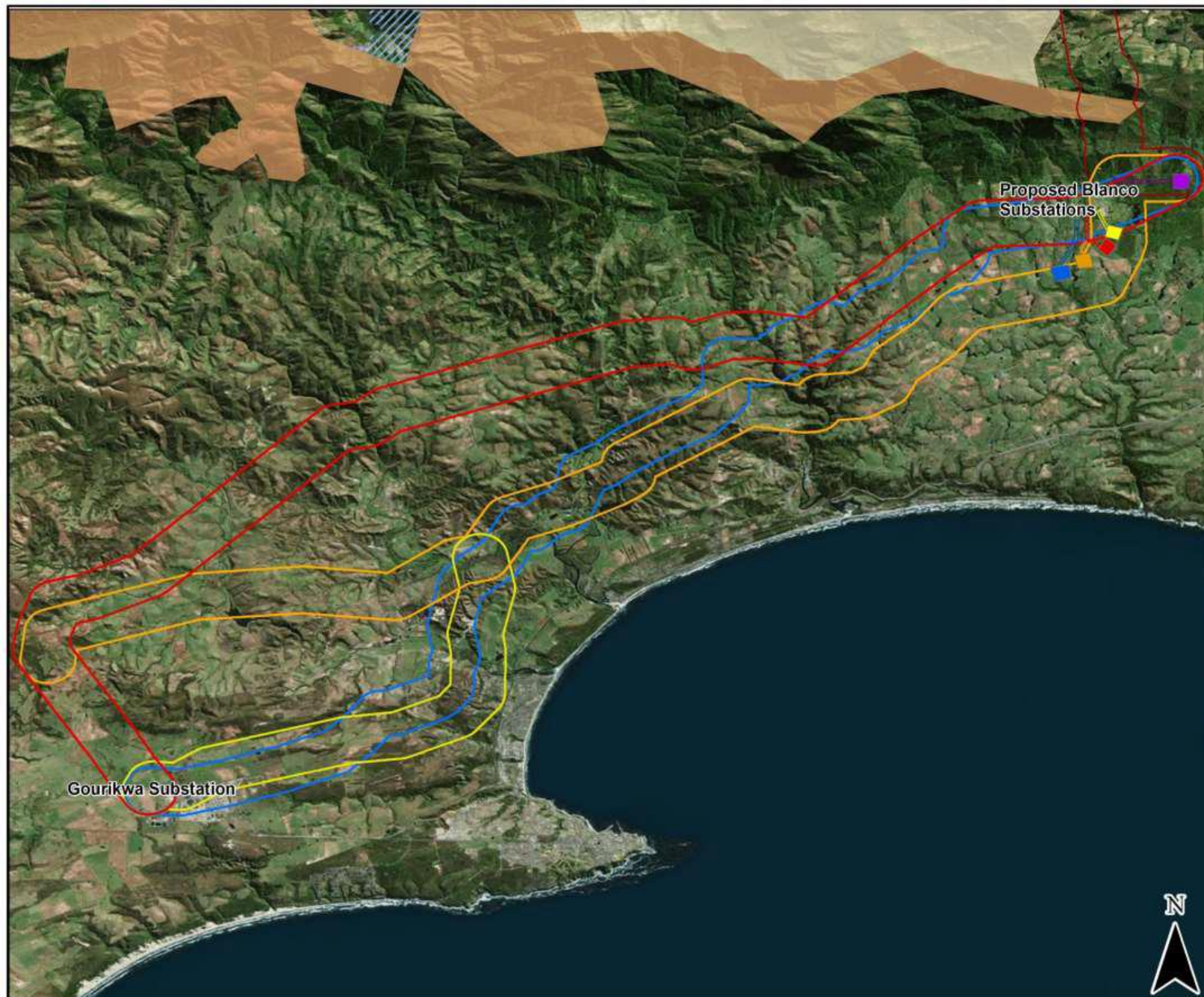
CRAIG SHOLTO-DOUGLAS  
JUNE 2017

# Wetlands sensitivity map



<b>EOH</b>
EOH Coastal and Environmental Services
Drawn by: Craig Sholto-Douglas
Date: August 2016
CES Project Code: 215
0 4 8 Kilometers
TITLE:
<b>Wetlands</b>
PROJECT:
Eskom Gourikwa-Blanco 400kV
<b>Legend</b>
Alternative 1
Alternative 2
Alternative 3
Alternative 4
<b>Wetland Health</b>
AB
C
DEF
Z1
Z2
Z3
Wetcluster
Perennial River

# Protected Areas Map



## EQH

EOH Coastal and Environmental Services

Drawn by: Craig Sholto-Douglas

Date: August 2016

CES Project Code: 215



TITLE:

## Protected Areas

PROJECT:

Eskom Gourikwa-Blanco 400kV

## Legend

### Protected Areas

- Doringrivier Wilderness Area
- Ruitersbos Nature Reserve
- NPAES

### Narina Substations

- Site 1
- Site 2
- Site 3
- Site 4
- Site 5

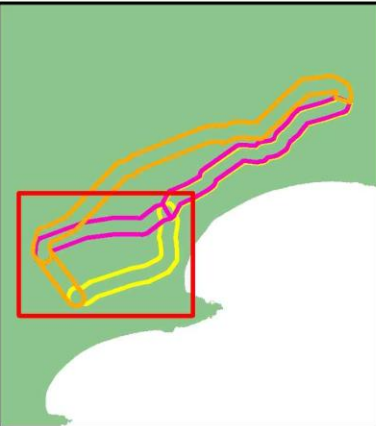
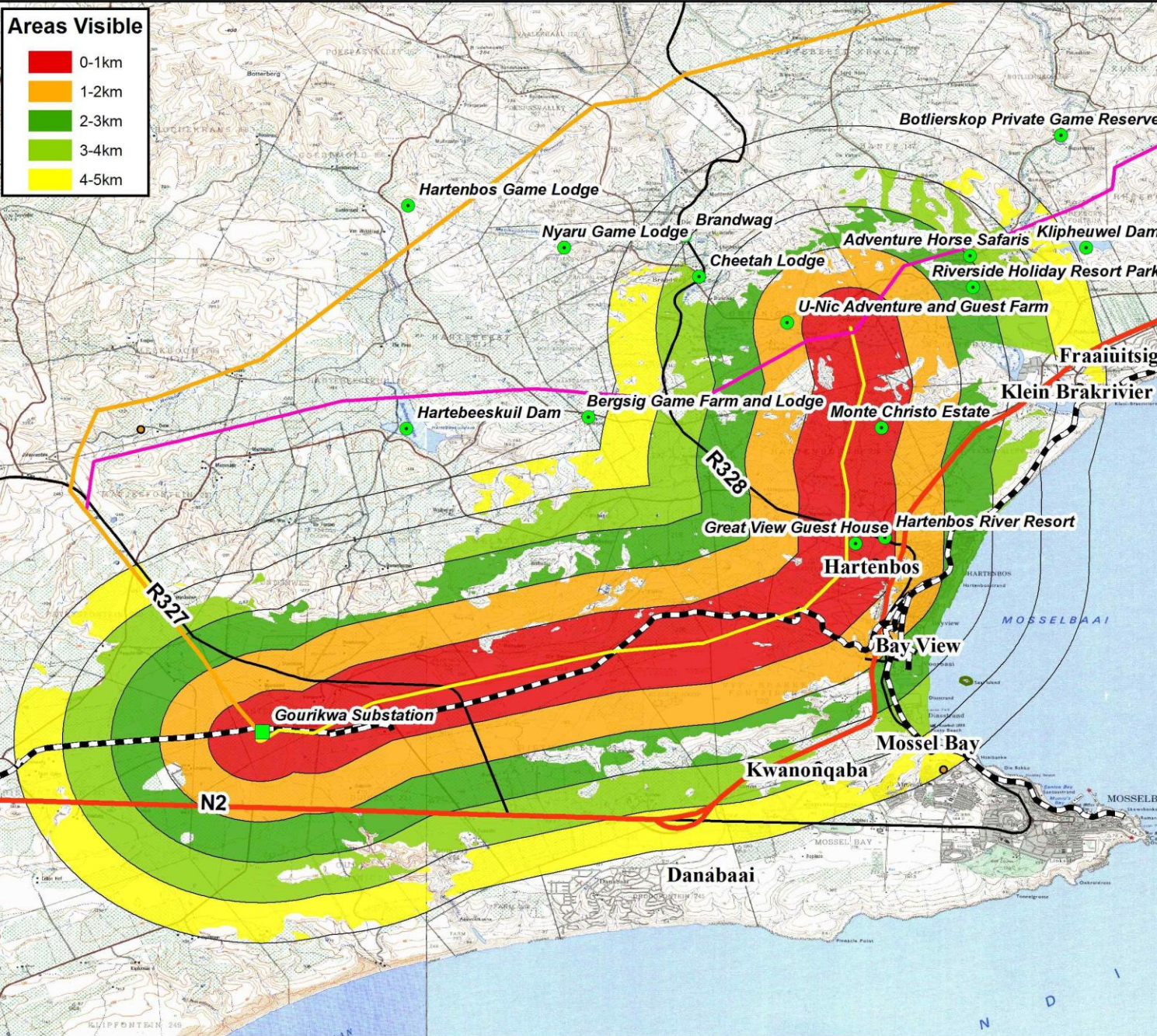
### Route Options

- Alternative 1
- Alternative 2
- Alternative 3
- Alternative 4

# VISUAL SENSITIVITY MAPS

## Areas Visible

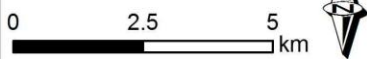
- 0-1km
- 1-2km
- 2-3km
- 3-4km
- 4-5km



## GOURIKWA - BLANCO VISIBILITY ANALYSIS ALTERNATIVE 3

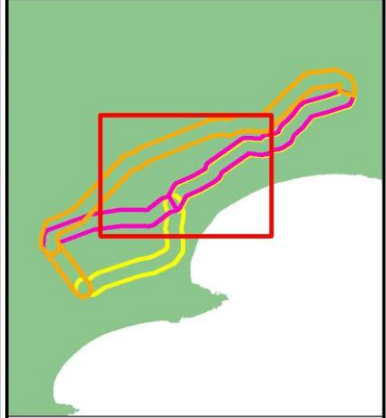
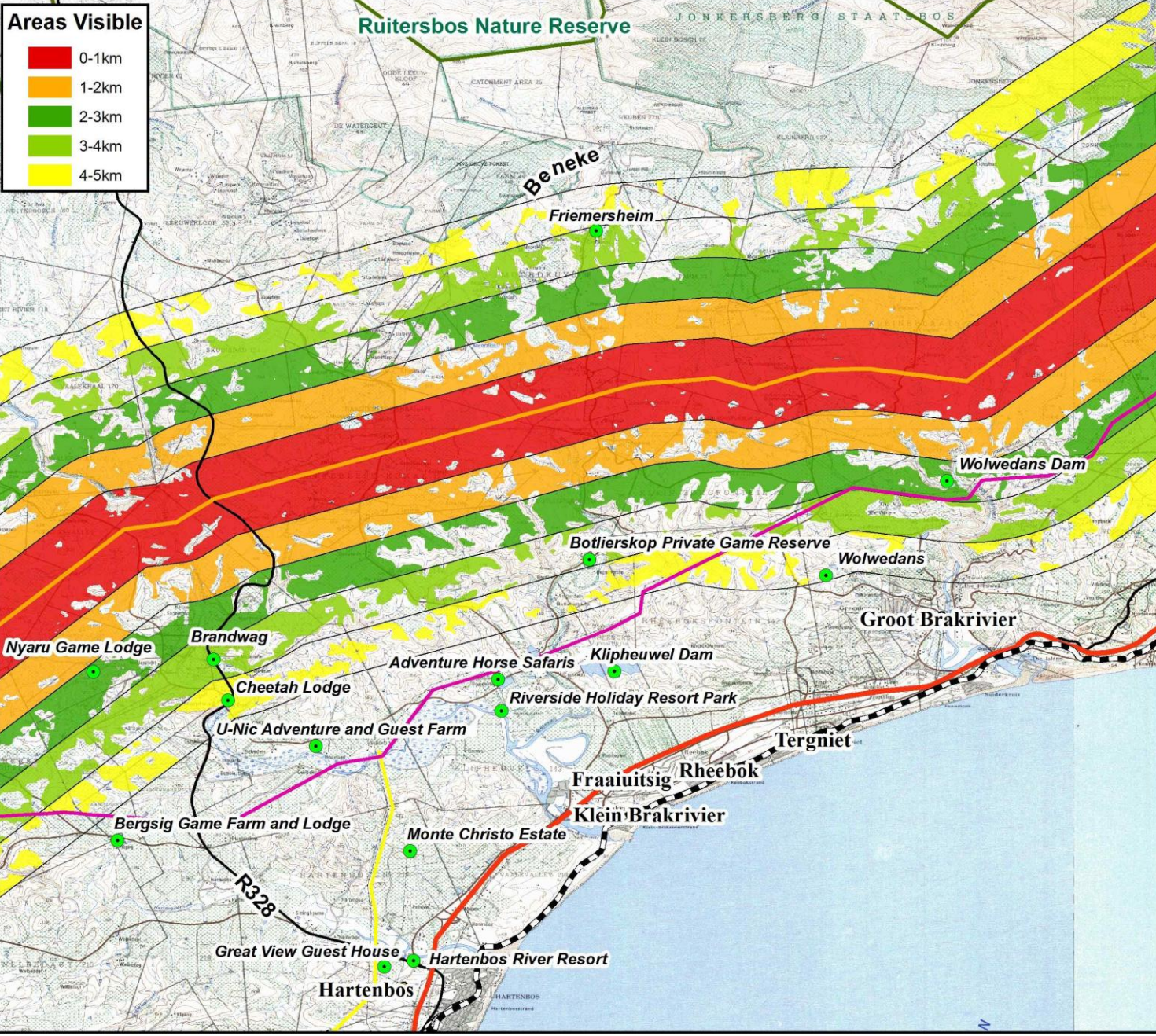
### Legend

- Point of Interest
- Blanco Substation
- Gourikwa Substation
- George Airport
- Alternative 1
- Alternative 2
- Alternative 3
- Railway Lines
- National Route
- Arterial Route
- Main Road
- Protected Areas



**Areas Visible**

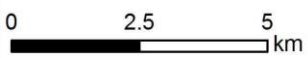
- 0-1km
- 1-2km
- 2-3km
- 3-4km
- 4-5km



**GOURIKWA - BLANCO  
VISIBILITY ANALYSIS  
ALTERNATIVE 1  
CENTRAL REGION**

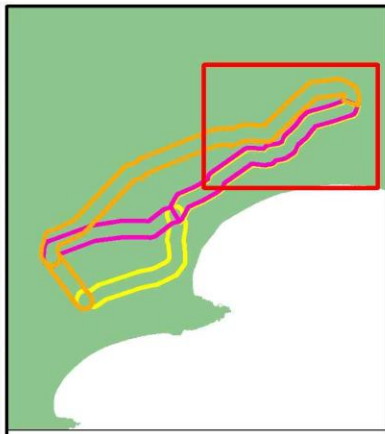
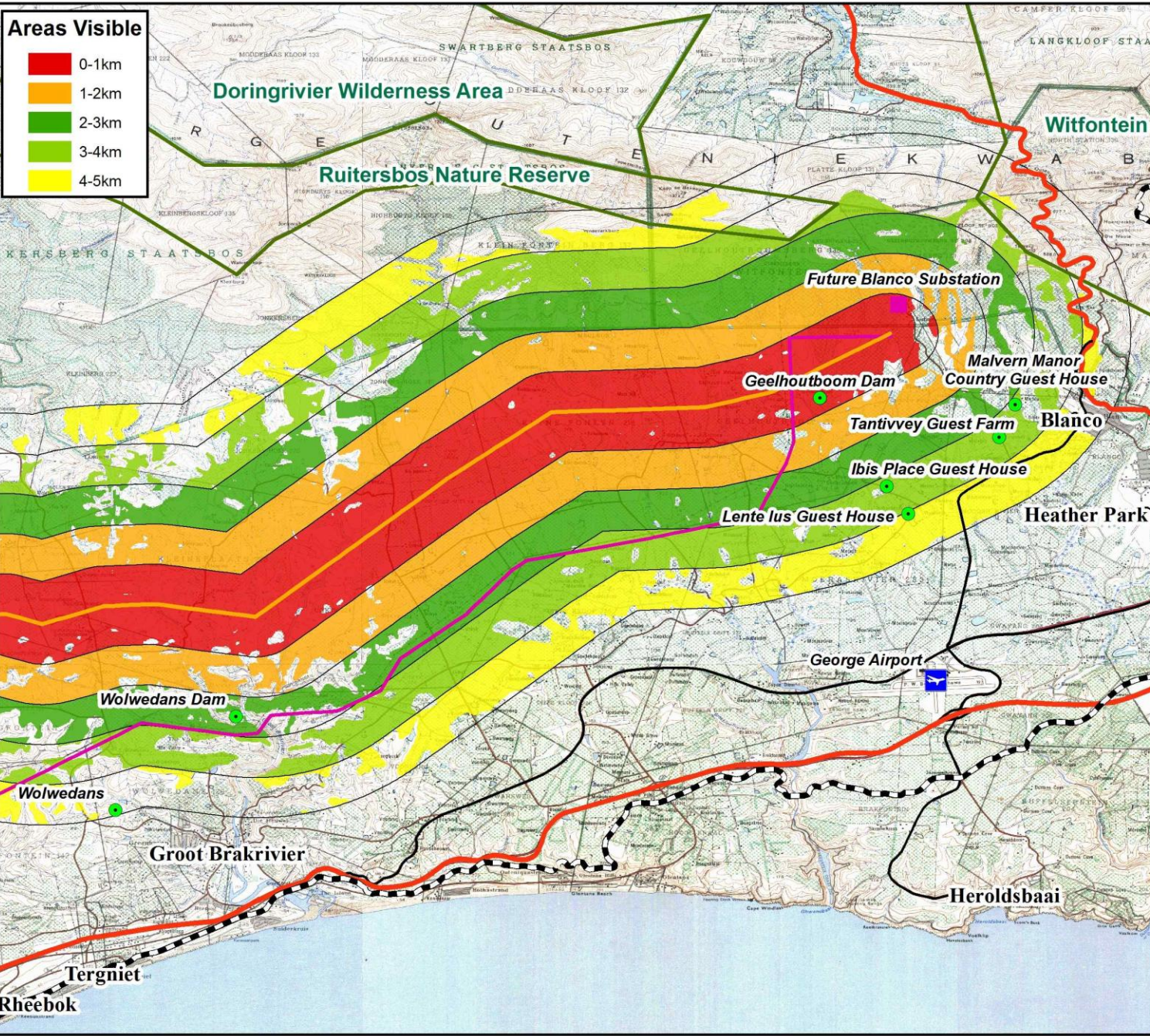
**Legend**

- Point of Interest
- Blanco Substation
- Gourikwa Substation
- George Airport
- Alternative 1
- Alternative 2
- Alternative 3
- Railway Lines
- National Route
- Arterial Route
- Main Road
- Protected Areas



**Areas Visible**

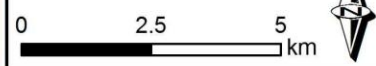
- 0-1km
- 1-2km
- 2-3km
- 3-4km
- 4-5km



**GOURIKWA - BLANCO  
VISIBILITY ANALYSIS  
ALTERNATIVE 1  
EASTERN REGION**

**Legend**

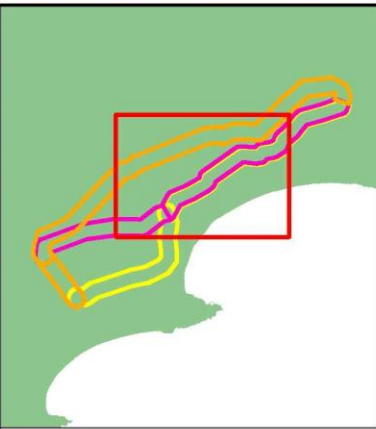
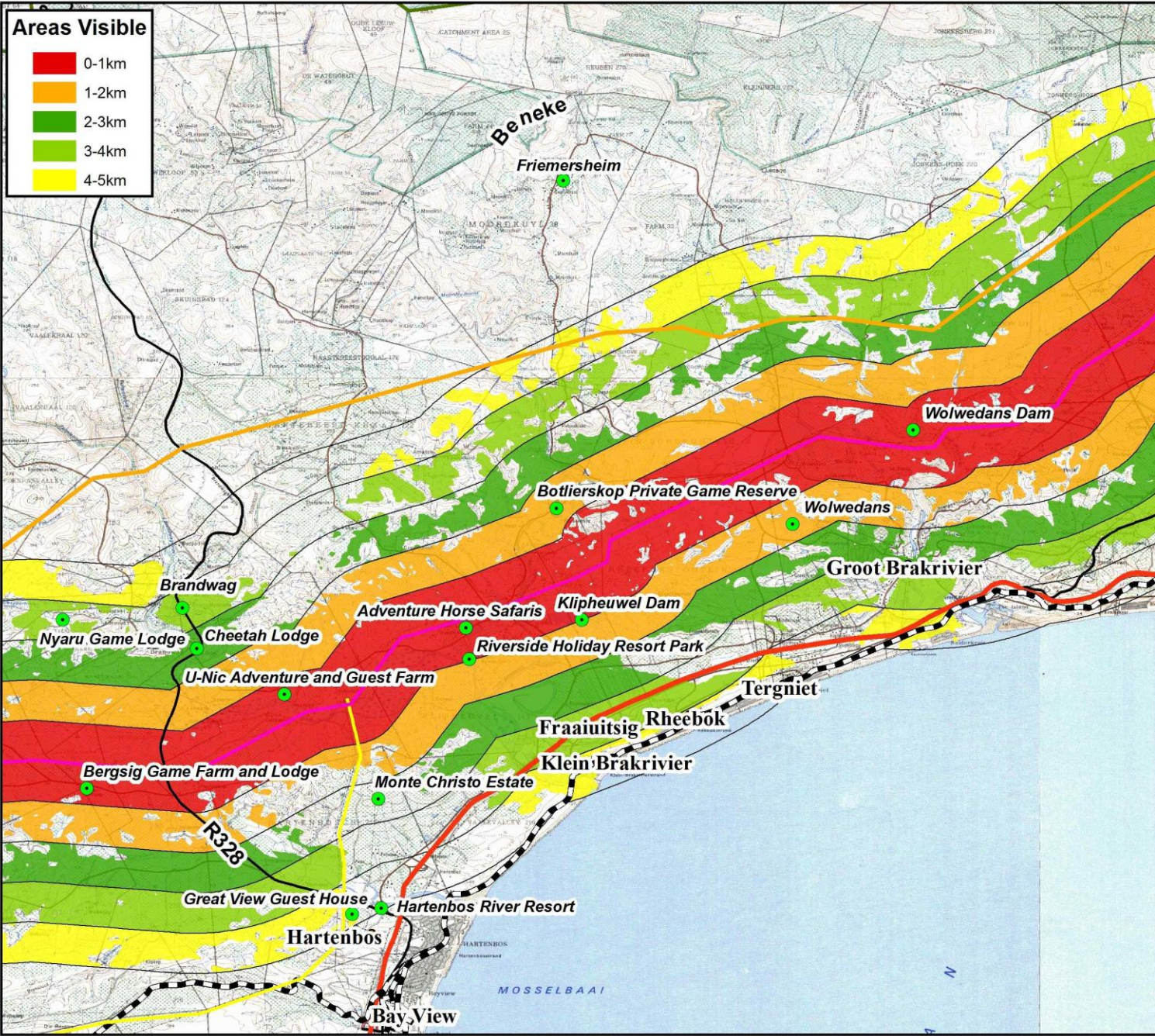
- Point of Interest
- Blanco Substation
- Gourikwa Substation
- George Airport
- Alternative 1
- Alternative 2
- Alternative 3
- Railway Lines
- National Route
- Arterial Route
- Main Road
- Protected Areas





### Areas Visible

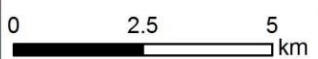
- 0-1km
- 1-2km
- 2-3km
- 3-4km
- 4-5km



### GOURIKWA - BLANCO VISIBILITY ANALYSIS ALTERNATIVE 2 CENTRAL REGION

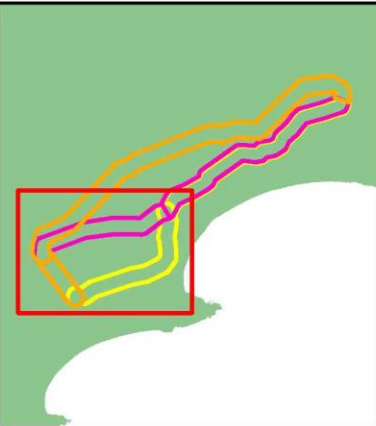
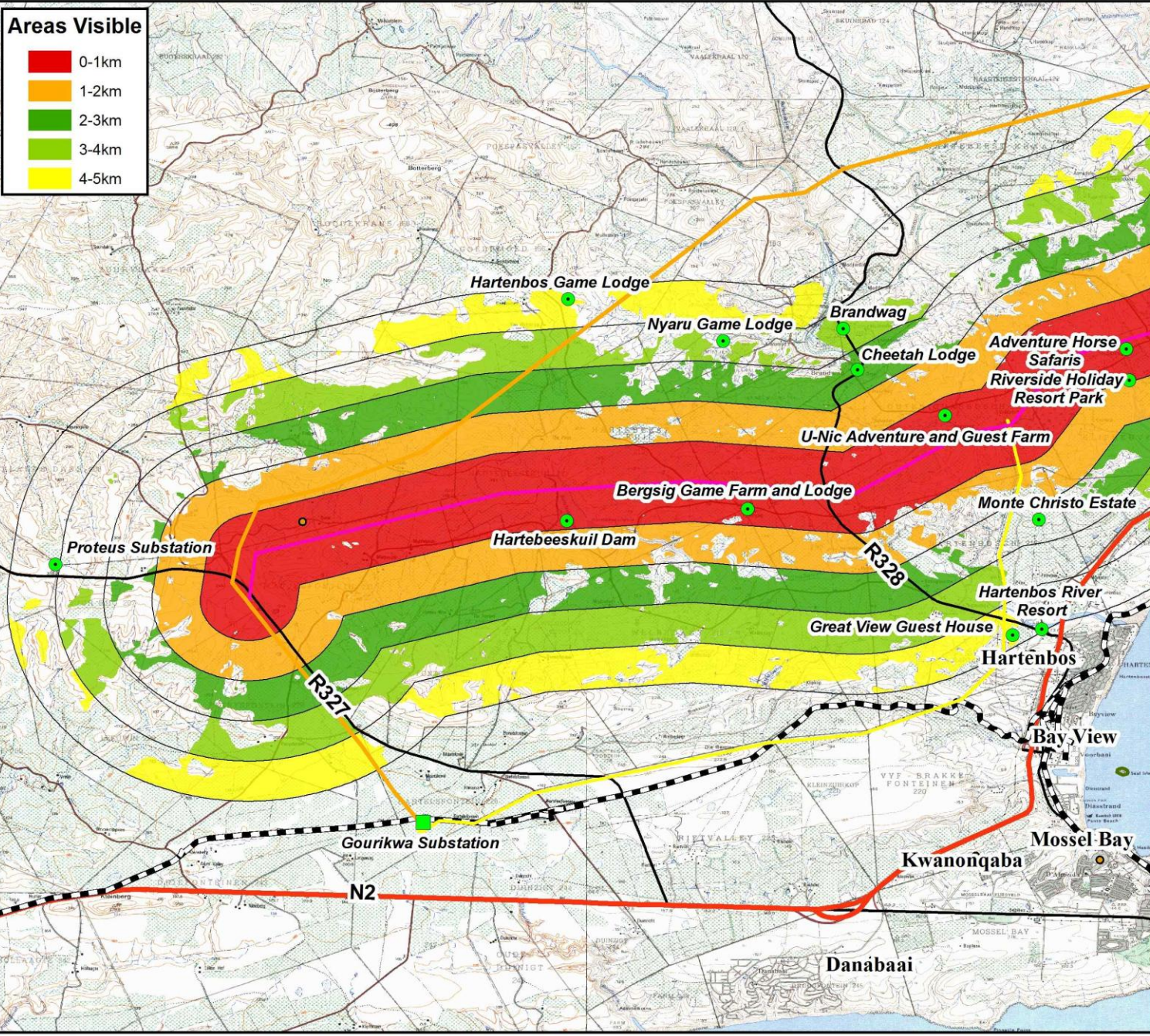
### Legend

- Point of Interest
- Blanco Substation
- Gourikwa Substation
- George Airport
- Alternative 1
- Alternative 2
- Alternative 3
- Railway Lines
- National Route
- Arterial Route
- Main Road
- Protected Areas



**Areas Visible**

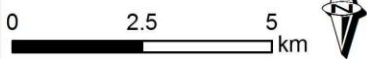
- 0-1km
- 1-2km
- 2-3km
- 3-4km
- 4-5km



**GOURIKWA - BLANCO VISIBILITY ANALYSIS ALTERNATIVE 2 WESTERN REGION**

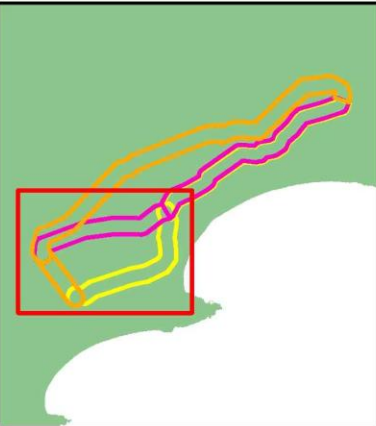
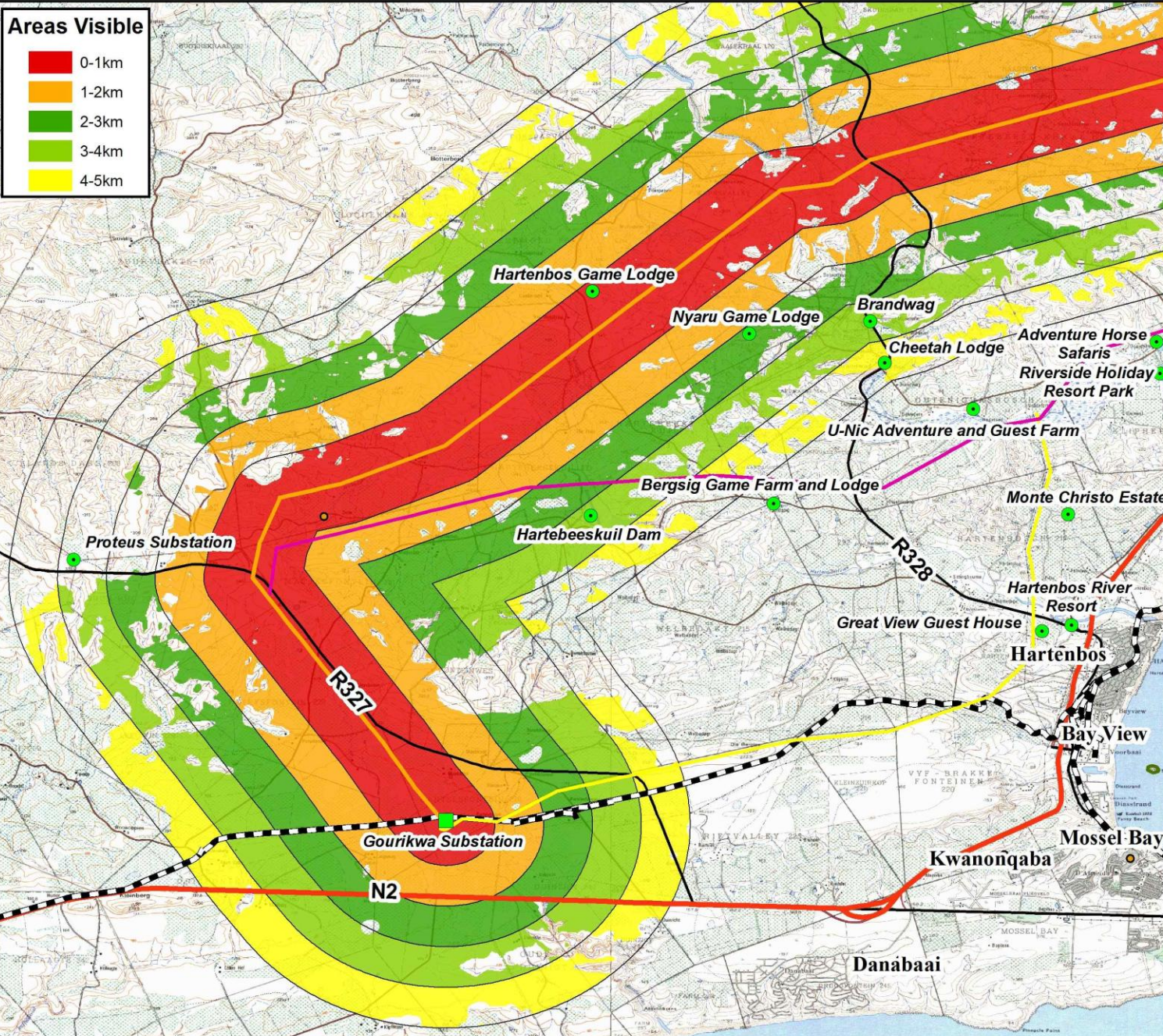
**Legend**

- Point of Interest
- Blanco Substation
- Gourikwa Substation
- George Airport
- Alternative 1
- Alternative 2
- Alternative 3
- Railway Lines
- National Route
- Arterial Route
- Main Road
- Protected Areas



**Areas Visible**

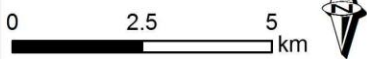
- 0-1km
- 1-2km
- 2-3km
- 3-4km
- 4-5km



**GOURIKWA - BLANCO  
VISIBILITY ANALYSIS  
ALTERNATIVE 1  
WESTERN REGION**

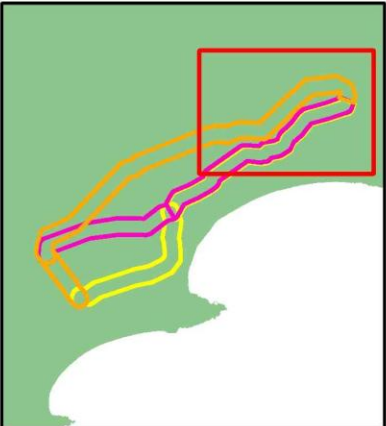
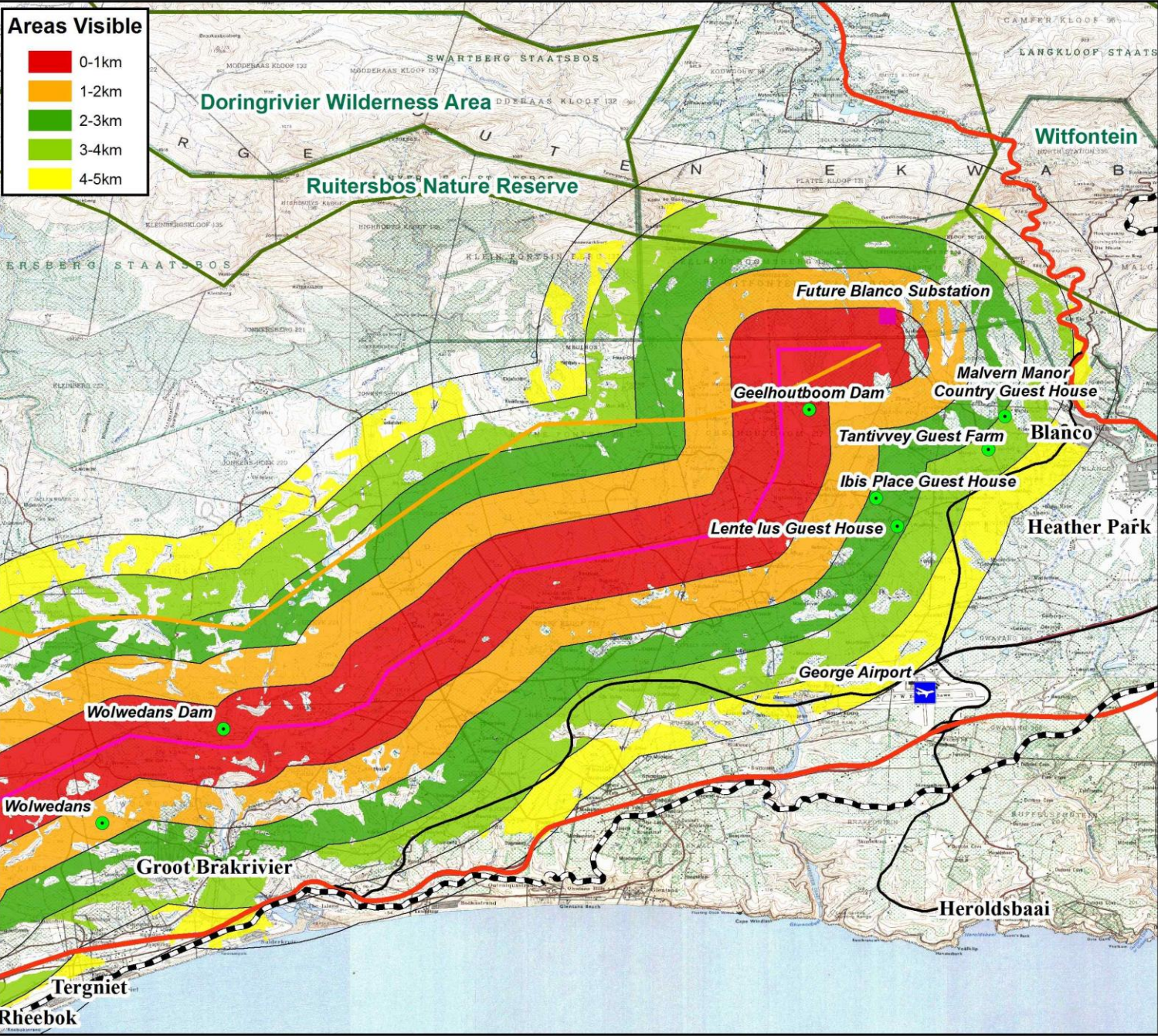
**Legend**

- Point of Interest
- Blanco Substation
- Gourikwa Substation
- George Airport
- Alternative 1
- Alternative 2
- Alternative 3
- Railway Lines
- National Route
- Arterial Route
- Main Road
- Protected Areas



**Areas Visible**

- 0-1km
- 1-2km
- 2-3km
- 3-4km
- 4-5km



**GOURIKWA - BLANCO  
VISIBILITY ANALYSIS  
ALTERNATIVE 2  
EASTERN REGION**

**Legend**

- Point of Interest
- Blanco Substation
- Gourikwa Substation
- George Airport
- Alternative 1
- Alternative 2
- Alternative 3
- Railway Lines
- National Route
- Arterial Route
- Main Road
- Protected Areas

